



**DEEP CYCLE**  
**SERIES: 4000**  
**MODEL: T12 250**

**BATTERY ENGINEERING**  
**WWW.ROLLSBATTERY.COM MADE IN CANADA**

**BATTERY TYPE: 12 VOLTS**

**DIMENSIONS:**

<b>LENGTH</b>	391 MM	15 3/8 INCHES
<b>WIDTH</b>	178 MM	7 INCHES
<b>HEIGHT</b>	365 MM	14 3/8 INCHES

**WEIGHTS:**

<b>WEIGHT DRY</b>	44 KG	97 LBS.
<b>WEIGHT WET</b>	57 KG	125 LBS.

**CONTAINER CONSTRUCTION:**

**CONTAINER:** POLYPROPYLENE  
**COVER:** POLYPROPYLENE

**TERMINALS:** AUTOMOTIVE (FLAG IF SPECIFIED)  
**HANDLES:** ROPE

**PLATES:**

**POSITIVE PLATE DIMENSION:**

<b>HEIGHT</b>	254 MM	10.000 INCHES
<b>WIDTH</b>	143 MM	5.625 INCHES
<b>THICKNESS</b>	4.32 MM	0.170 INCHES

**CELLS:** 6

**PLATES/CELL:** 9

**NEGATIVE PLATE DIMENSION:**

<b>HEIGHT</b>	254 MM	10.000 INCHES
<b>WIDTH</b>	143 MM	5.625 INCHES
<b>THICKNESS</b>	3.05 MM	0.120 INCHES

**SEPARATOR:**

**THICKNESS** 2 MM 0.081 INCHES

**INSULATION:**

**GLASS MAT** 1 MM 0.020 INCHES

**CAPACITY:**

**CRANK AMPS:**  
**COLD (CCA)** 0°F / -17.8°C 648  
**MARINE (MCA)** 32°F / 0°C 810

**ELECTROLYTE RESERVE:**

**ABOVE PLATES** 51 MM 2 INCHES

**RESERVE CAPACITY:**

**RC @ 25A** 390 MINUTES

**20 HR RATE: 200**

	<b>HOUR RATE</b>	<b>SPECIFIC GRAVITY</b>	<b>CAP / AH</b>	<b>CURRENT / AMPS</b>
CAPACITY @	100 HOUR RATE	1.280 SP. GR.	266	2.66
CAPACITY @	72 HOUR RATE	1.280 SP. GR.	252	3.50
CAPACITY @	50 HOUR RATE	1.280 SP. GR.	238	4.76
CAPACITY @	24 HOUR RATE	1.280 SP. GR.	206	8.6
<b>CAPACITY @</b>	<b>20 HOUR RATE</b>	<b>1.280 SP. GR.</b>	<b>200</b>	<b>10.0</b>
CAPACITY @	15 HOUR RATE	1.280 SP. GR.	188	12.5
CAPACITY @	12 HOUR RATE	1.280 SP. GR.	178	14.8
CAPACITY @	10 HOUR RATE	1.280 SP. GR.	170	17.0
CAPACITY @	8 HOUR RATE	1.280 SP. GR.	160	20.0
CAPACITY @	6 HOUR RATE	1.280 SP. GR.	148	24.7
CAPACITY @	5 HOUR RATE	1.280 SP. GR.	140	28
CAPACITY @	4 HOUR RATE	1.280 SP. GR.	130	33
CAPACITY @	3 HOUR RATE	1.280 SP. GR.	118	39
CAPACITY @	2 HOUR RATE	1.280 SP. GR.	102	51
CAPACITY @	1 HOUR RATE	1.280 SP. GR.	72	72



296 Labrosse Avenue, Pointe-Claire, QC, H9R 5L8, Canada  
 Phone: (514) 630-5630 Fax: (514) 426-9123  
 Toll Free: 1-866-630-5630 email: info@matrixenergy.ca  
 For more information visit www.matrixenergy.ca





PART NUMBER: T12250

WEIGHT WET: 125 LB / 57 KG

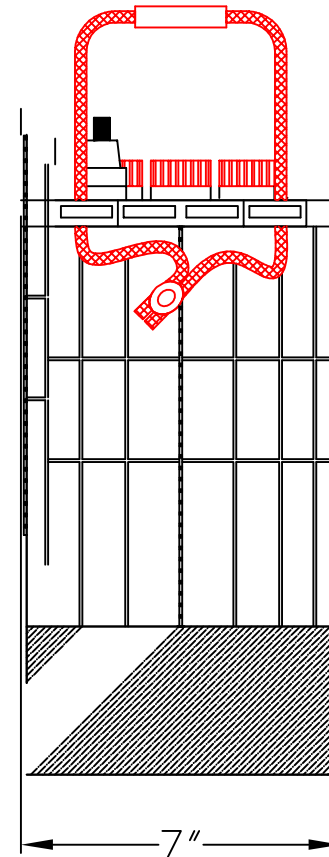
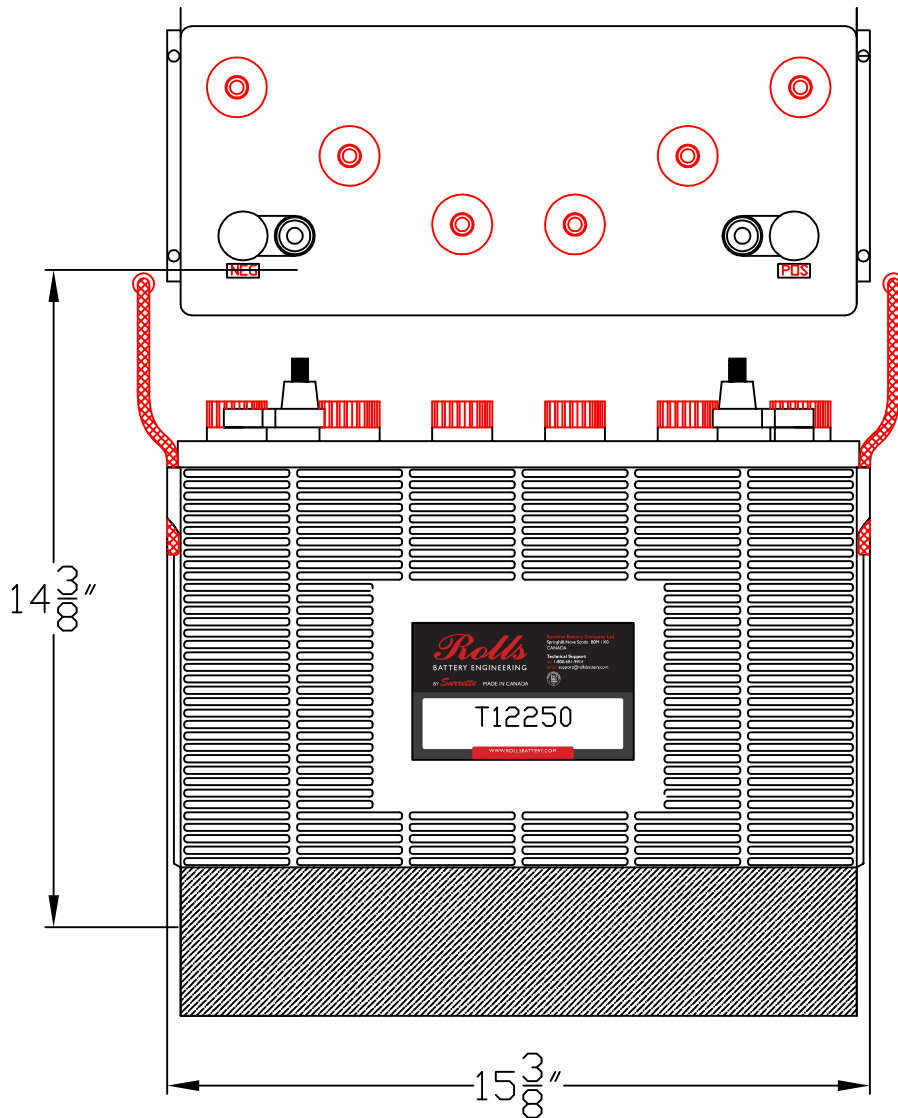
WET DRY: 97 LB / 44 KG

CAPACITY 200 AH 20 HR

VOLTAGE: 12 V

OVERALL DIMENSIONS: 15 $\frac{3}{8}$ " X 7" X 14 $\frac{3}{8}$ "

MAX HEIGHT WITH OPTIONAL HYDROCAPS 14  $\frac{3}{4}$ "



**Rolls**  
BATTERY ENGINEERING

TITLE: T12250

DESCRIPTION: 12V DEEP CYCLE SERIES 400/4000

CONTACT INFO:  
WEB: [WWW.ROLLSBATTERY.COM](http://WWW.ROLLSBATTERY.COM)  
E-MAIL: [SALES@ROLLSBATTERY.COM](mailto:SALES@ROLLSBATTERY.COM)  
PHONE: 1-800-681-9914

SCALE: 1" = 4" 8.5" X 11" JPEG: NOT TO SCALE

Drawn by: S. WILES Approved By: D. SURRETTE

DATE: 5-FEB-01 REVISION 0

DRAWING NO.: DWG 046, BD-T12250