

DÉTAIL K

FLASHING, PREPAINTED GALVANIZED STEEL, COLOUR MATCHING MatrixAir CLADDING - TO BE SHAPED ON SITE

FOAM CLOSURE ON CLADDING FACE

USE POP-RIVETS AND SCREWS FOR THIS JOINT WITH MORE THAN 2 METAL LAYERS

ALUMINIUM-PAPER LINER PROTECTING THE INSULATION APPLIED BY INSTALLER (IF APPLICABLE)

#14x1" (6mm D x 25mm L) SELF-DRILLING METAL SCREW, HIDDEN, PLATED AND GALVANIZED, TYPICALLY MINIMUM 6 SCREWS AT EVERY ATTACHING POINT

TEK3 #14x1" (6mm D x 25mm L) EXPOSED SELF-DRILLING METAL SCREW, PLATED AND GALVANIZED, PAINTED MATCHING COLLECTOR COLOUR, TYPICALLY @ EVERY 15" [380mm]

DIMENSION TO BE CHECKED ON SITE AND ADJUSTED IF NEEDED

PERFORATIONS FACILITATING LATERAL AIR CIRCULATION IN THE COLLECTOR

FASTENERS TO THE BUILDING STRUCTURE ACCORDING TO THE BUILDING CODE TO RESIST APPLICABLE CHARGES (WIND, SUCTION AND OTHERS), TO BE DETERMINED BY OTHERS. THE OWNER SHOULD CHECK FOR THE LOCATION OF GIRTS OR OTHER WALL COMPONENTS TO WHICH THE COLLECTOR WILL BE ATTACHED TO THESE GIRTS SHOULD BE ADEQUATELY ATTACHED TO THE BUILDING STRUCTURE.

NOTES:  
THIS DRAWING IS A SUPERPOSITION OF THE SOLAR COLLECTOR STRUCTURE ON THE ARCHITECTURAL DRAWINGS (DRAWING ON WHICH OFTEN THE DIMENSIONS CANNOT BE MEASURED PRECISELY) AND IS NOT BASED ON A SITE VISIT. NO STRUCTURAL DRAWINGS HAVE BEEN ANALYSED.

BSR Consultants and Matrix Energy ARE NOT RESPONSIBLE FOR DIFFERENCES BETWEEN DIMENSIONS ON SITE AND THESE DRAWINGS.

SMALL DIMENSION DIFFERENCES ARE POSSIBLE.

THE FINAL PRECISE DIMENSIONS WILL BE MEASURED ON SITE BY THE CONTRACTOR AND THE COLLECTOR'S DIMENSIONS WILL BE ADJUSTED ACCORDINGLY.

THE OPENINGS FOR THE AIR-INTAKES AND THE CONNECTIONS TO THE VENTILATION DUCTS ARE THE RESPONSIBILITY OF THE GENERAL CONTRACTOR.

THE INSTALLING CONTRACTOR WILL MAKE SURE THAT THE SOLAR COLLECTOR IS SAFELY ATTACHED TO THE BUILDING STRUCTURE, ACCORDING TO THE NATIONAL BUILDING CODE.

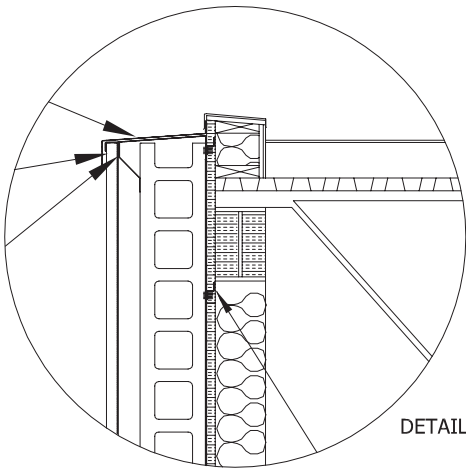
BSR Consultants and Matrix Energy ARE NOT RESPONSIBLE FOR THE FASTENERS TO THE BUILDING STRUCTURE.

The collector's air outlet (air intake of the ventilation system), placed behind the optional louver, needs to be positioned in the lower part of the MatrixAir™ TR solar collector.

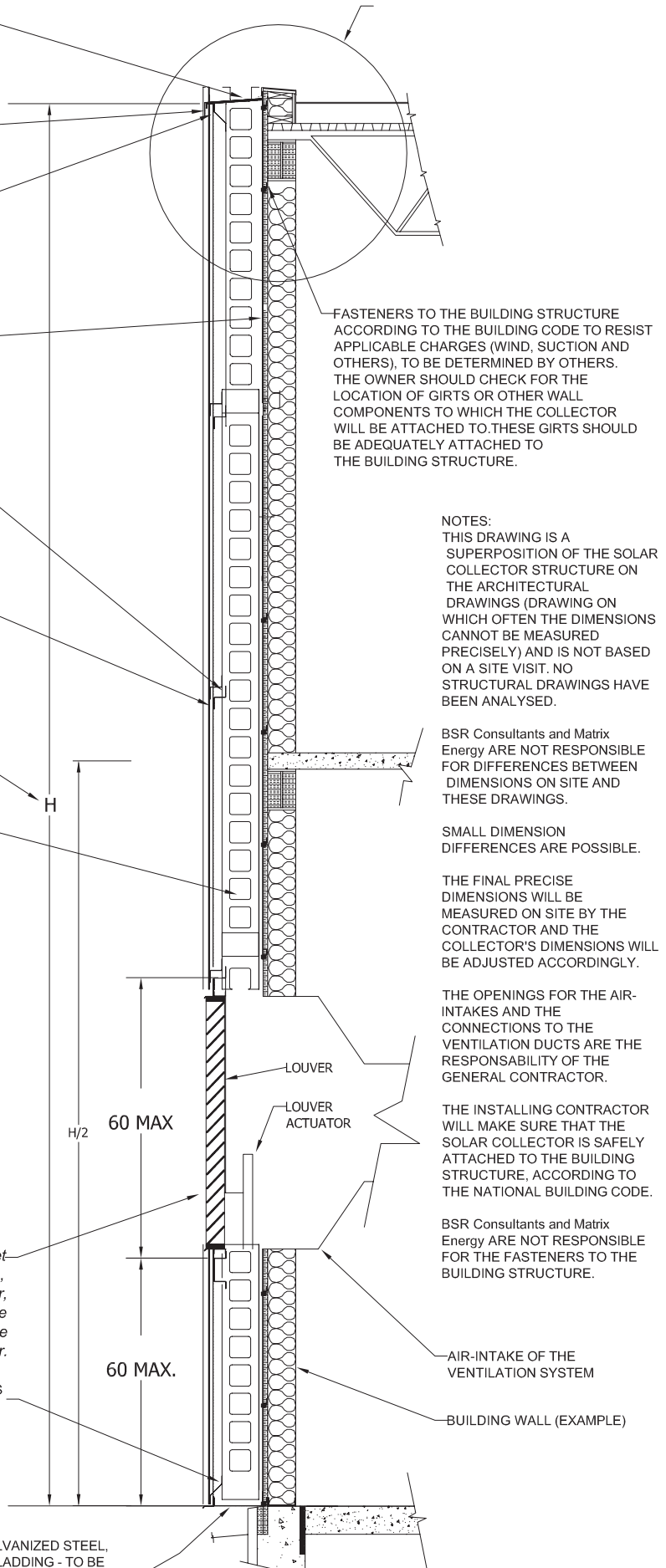
USE POP-RIVETS AND SCREWS FOR THIS JOINT WITH MORE THAN 2 METAL LAYERS

FLASHING, PREPAINTED GALVANIZED STEEL, COLOUR MATCHING MatrixAir CLADDING - TO BE SHAPED ON SITE (WITH OPENINGS FOR WATER DRAINAGE FOR THE BOTTOM PROFILE)

NOTE:  
This drawing was issued as an example. This is not a construction drawing. The conformity to specific local building codes and regulations and the installation conditions are to be verified and respected by the installer.



DÉTAIL K



**MatrixAir™ TR**  
Transpired Solar Air Heating System

The information presented is for discussion purposes only and remains the exclusive property of Matrix Energy Inc. and may not be reproduced in whole or in part without expressed written permission of Matrix Energy Inc. MatrixAir is a registered trademark of Matrix Energy Inc. The MatrixAir™ TR solar air heating system is Patent Pending.

CLIENT:

ÉNERGIE  
**MATRIX**  
ENERGY

296 Labrosse Avenue  
P.O. Box 2588 - Québec  
H8R 5L8, Canada  
Tel: 1-866-636-9530  
Fax: 514-426-9123  
www.matrixenergy.ca

PROJECT:

Typical MatrixAir™ TR solar air heating collector  
Parallel wall mount - vertical cladding profile